

ASK YOUR DOCTOR ABOUT ADHESION PREVENTION TODAY!

Common measures that surgeons take to reduce adhesions include:

- Using a minimally invasive surgical technique
- Shortening surgical time
- Ensuring tissue remains moist
- Limiting exposure of tissue to thermal treatment
- Minimizing exposure of tissues to materials that may be irritating
- Reducing bleeding during surgery
- Reducing infection and inflammation

***OXIPLEX/IU® GEL CAN ALSO HELP
YOUR SURGEON TO REDUCE YOUR
RISK OF FORMING ADHESIONS
AFTER INTRAUTERINE SURGERY***

Oxiplex/IU Gel

- Oxiplex/IU® is sterile, easily absorbable, clear, flowable gel that consists of Carboxymethylcellulose (CMC) and Polyethylene oxide (PEO) in water
- Oxiplex/IU is used following intrauterine surgery to reduce adhesion formation at the surgical site
- Oxiplex/IU gel forms a temporary, lubricious barrier that coats and protects healing tissues where adhesions may form
- Studies have shown that Oxiplex/IU reduces adhesion formation and may improve fertility rates



Adhesion Barrier Gel for Intrauterine Surgery



FzioMed, Inc.
231 Bonetti Dr.
San Luis Obispo, CA, 93401 USA

www.fziomed.com



REDUCING INTRAUTERINE ADHESIONS

 **FzioMed**

PRESERVE SURGICAL EXCELLENCE

Not for Distribution in the USA.
Oxiplex/IU & FzioMed are registered trademarks of FzioMed, Inc.
MM0131(-)

WHAT ARE ADHESIONS?

Adhesions are fibrous bands that form between tissues and organs in the body. They are sometimes called internal scarring and can form as part of tissue healing.

They can also result from tissue injury from trauma, radiation, surgery and certain clinical conditions such as pelvic infection.

They can occur in a majority of women having intrauterine surgery resulting for example in the walls of the uterine cavity adhering to each other.

ADHESIONS ARE A COMMON COMPLICATION OF INTRAUTERINE SURGERY



Normal Uterine Cavity

INTRAUTERINE PROCEDURES THAT COMMONLY CAUSE ADHESIONS

- Myomectomy
- Dilation and curettage
- Adhesiolysis
- Retained products of conception
- Resection of septate uterus
- Reconstruction of other congenital uterine anomalies
- Polypectomy
- Endometrial ablation

ADHESIONS CAN DEVELOP DESPITE THE BEST SURGICAL TECHNIQUE

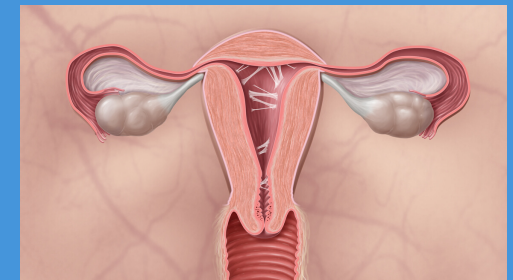


INTRAUTERINE ADHESIONS CAUSE PROBLEMS

The internal walls of the uterus are intended to be separate and move freely about each other. When adhesions form in the uterine cavity, problems can arise such as:

- Infertility
- Abnormal uterine bleeding
- Recurrent pregnancy loss
- Painful menstruation (Dysmenorrhea)
- Chronic Pelvic pain
- Increased surgical difficulty in follow up surgery with increased risk of injury

THE CURRENT FOCUS OF MANAGEMENT FOR INTRAUTERINE ADHESIONS IS PREVENTION



Uterus with Adhesions